

EBERL

IRON WORKS INC.



Metal Fabrication

Unistrut Buffalo

Systems Installation

Traffic Safety Products

A TRADITION OF SERVICE



Founded in 1923 by George and Frank

Eberl, **Eberl Iron Works** started as a small welding shop which fabricated wrought iron railings, exterior fire escapes and miscellaneous iron.

Joined in later years by Leo, Anthony, and Edward, the Eberl brothers developed the fabrication business through dedication to quality and service. Today's **Metal Fabrication Division** of Eberl Iron Works continues this tradition.

Distribution began in 1946 with the introduction of Unistrut metal framing, followed shortly thereafter by Grip Strut safety grating. Soon after, the **Unistrut Buffalo Division** was formed to sell a variety of non-residential building products throughout Upstate New York. Regional sales representatives and customer service staff provide assistance for a customer's project from inception to completion.

In 1991, due to the continued growth of the design, build, and install business, the **Systems Installation Division** was launched. This division provides full service to those requiring installation of specialty systems.

Eberl Iron Works introduced its **Traffic Safety Products Division** in 2003 due to the increased demand for highway sign support. Today it has grown into a one-stop shop for all traffic safety needs.

Today, the second generation brothers, Frank and George Eberl, have been joined by the third generation, Nora and John Eberl to operate **Eberl Iron Works**. Whether it's fabricating metal, selling products or installing systems, the Eberls and the entire Eberl team continue the **Tradition of Service**.



EBERL

IRON WORKS INC.

More than meets the eye

With four unique and distinct divisions, Eberl Iron Works can offer its customers a lot more than you might imagine.

Metal Fabrication Division

Eberl Iron Works' **Metal Fabrication Division** specializes in the shearing and forming of sheets and plates. Hole punching, notching, welding and finishing are available upon request. A comprehensive inventory of sheets, plates, galvanized and floor plates is in stock. A selection of angles, channels, flats and round bars is also available.

The strength of our **Metal Fabrication Division** is clearly our ability to provide a diversity of shapes for a variety of markets. Steel stair pans and floor plate treads are made for the miscellaneous metal markets. Flat and bent plates along with screed angle and clip angles are provided for the structural steel markets. Steel sidewalk, curb and gutter forms are made for the concrete contractor. Specialty shapes such as metal clips and metal hoods are formed for our OEM customers. Fabrication of custom parts is provided for the Unistrut Buffalo Division. Eberl's **Metal Fabrication Division** serves its customers' steel needs paying attention to detail and timely service.

Systems Installation Division

Eberl Iron Works' **Systems Installation Division** is the design/build division which takes your project from concept to completion. The specialty systems range from safety to medical supports and from decorative to in-plant requirements.

Fall Arrest Systems

- ◇ Horizontal and vertical

Medical Support Systems

- ◇ For x-ray machines, surgical lights and monitor supports

Ceiling Grid Systems

- ◇ For lighting, HVAC components and production line tool supports

Axent Display Systems

- ◇ For decorative and flexible geometric designs

Structural Space Frame Systems

- ◇ For roofs, glass walls, sky lights and canopies

Mezzanine Systems

- ◇ Custom design for plants and storage facilities using modular components

Unistrut Buffalo

Eberl Iron Works' **Unistrut Buffalo Division** warehouses and distributes non-residential building products. Target markets are structural support, safe walking surfaces and general support.

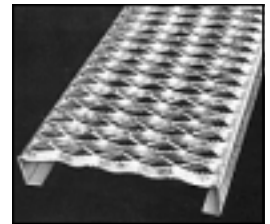
World of Support

- ◇ Unistrut Metal Framing
- ◇ Telestrut Metal Framing
- ◇ Fiberglass Channel Framing
- ◇ R-Port Rooftop Support
- ◇ ZSI Cushioned Clamping Systems
- ◇ Allied Gatorshield Tubing
- ◇ Clic Pipe Hanger
- ◇ Lindapter Support Systems
- ◇ Square-Fit Telescoping Tubing
- ◇ Food Grade Strut
- ◇ Kee Klamp Structural Fittings



Safety Gratings

- ◇ Grip Strut
- ◇ Perf-O-Grip
- ◇ Mezzanine Gratings
- ◇ Aickinstrut Fiberglass Gratings
- ◇ Roofwalk Rooftop Walkways
- ◇ Traction Tread
- ◇ Wooster Products



Traffic Safety Products

Eberl Iron Works' **Traffic Safety Products Division** is dedicated to providing quality custom traffic safety/control products.

Sign Posts and Accessories

- ◇ Telespar Sign Support Systems
- ◇ Telespar Qwik-Punch Sign Posts
- ◇ Type A High Capacity Sign Support
- ◇ U-Channel Green & Galv. Sign Posts
- ◇ Round Sign Posts
- ◇ BriteSide Reflective Panels
- ◇ Sign Brackets & Hardware
- ◇ Aluminum & Flexible Signs



Marking & Delineator Devices

- ◇ Safe-Hit Channelizers & Delineators
- ◇ Artuk Flex-Rail Guardrail Markers
- ◇ U-Channel Delineators
- ◇ RubberTough & Safe-Hit Crosswalk Markers
- ◇ Fire Hydrant Marking Systems

Traffic Control

- ◇ Type III Barricades
- ◇ A-Frame Barricades
- ◇ Spring Cones and Plastic Cones
- ◇ Channelizer Drums
- ◇ End Stanchions
- ◇ Roll Up Signs



Parking Lot Items

- ◇ Parking Curbs
- ◇ Safety Rider Speed Bumps & Humps
- ◇ Portable Stop Signs
- ◇ The Bollard Cover
- ◇ Steel Bollards
- ◇ Rubber Bases

Equipment & Tools

- ◇ Skidril Drivers & Breakers
- ◇ Drive Caps, Shanks & Jackhammer Tools
- ◇ Drum Dr.
- ◇ U-jack Post Pullers

Other Traffic Products

- ◇ ANSI Class II Safety Vests
- ◇ Reflective Safety T's
- ◇ Stop/Slow Paddles
- ◇ Plastic Safety Fencing
- ◇ Reflective Road Tape
- ◇ Chip Seal Markers





EBERL

IRON WORKS INC.

128 Sycamore Street
Buffalo, New York 14204-1492
716-854-7633 1-800-285-3056
Fax: 716-854-1184
www.eberliron.com